

FAIRHILL SHOPPING CENTRE



Fairhill
Ballymena

SHOPPING

BALLYMENA BT43 6UF



TOWN CENTRE STATISTICS

150,000
Catchment
Population

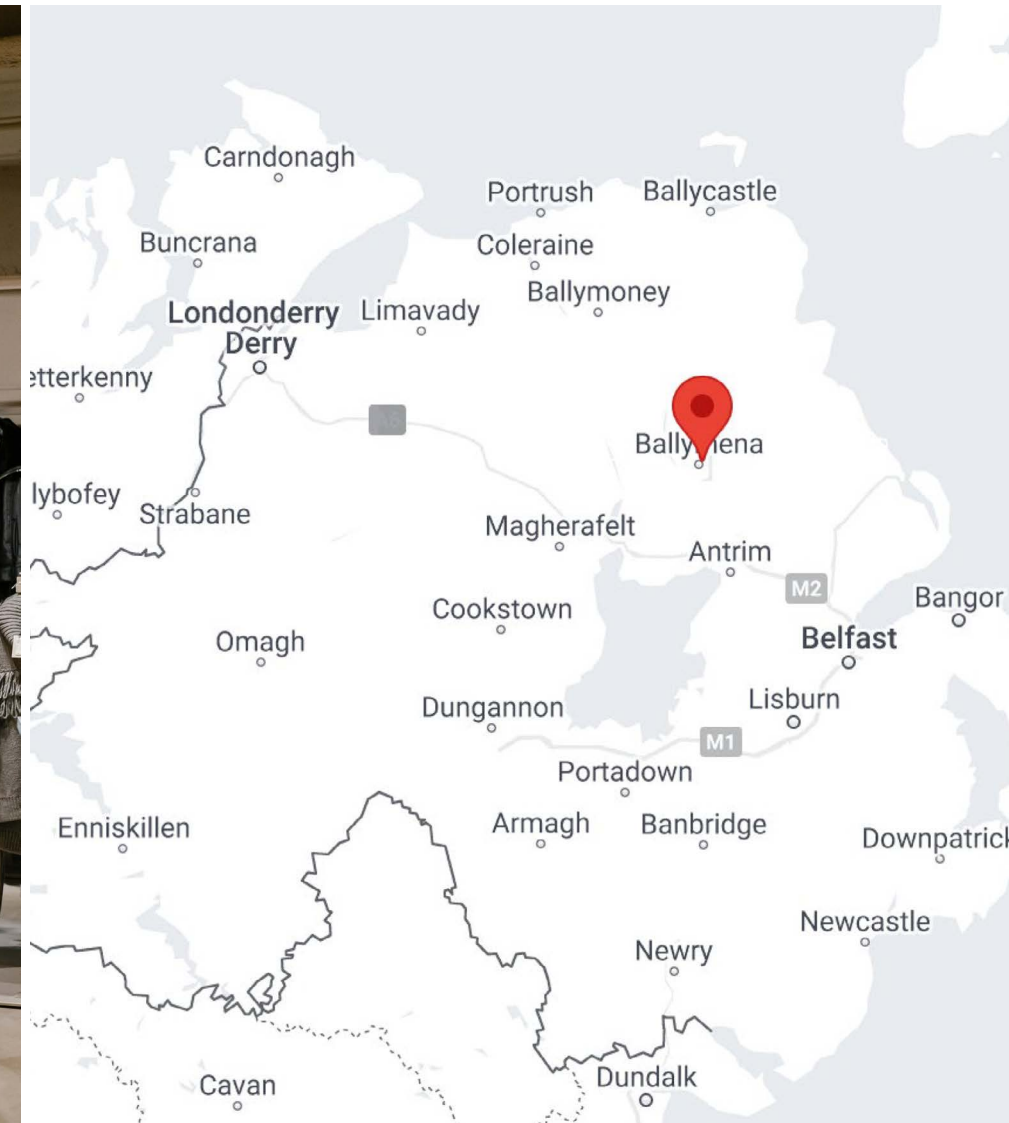
3.25M
Shoppers
per annum

c.65,000
Ballymena Town
Population

£93.12
Average spend per person, per month on food and non-alcoholic drink

£28.56
Average spend per person, per month on cosmetics & toiletries

£38.44
Average spend per person, per month on womenswear & footwear



ASSET MANAGEMENT INITIATIVES

Fairhill Shopping Centre is building for an exciting future.

- New 38,000 sq ft Primark being developed to open in early 2025
- River Island relocated to a new 11,000 sq ft two storey unit



15.6K
Cars passing
per day



30min
From Belfast
City Centre



150,00
Catchment
Population



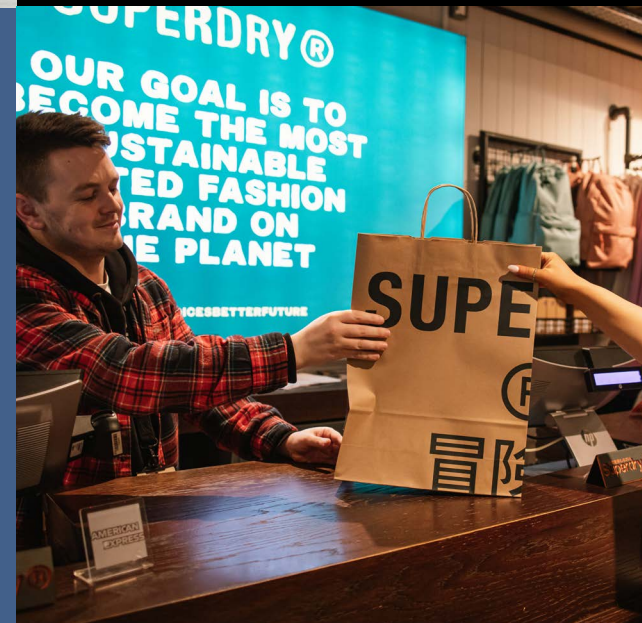
15min
Walk from
train station



900
Space multi
storey car park



1-2hr
Dwell time







LEASING AGENT

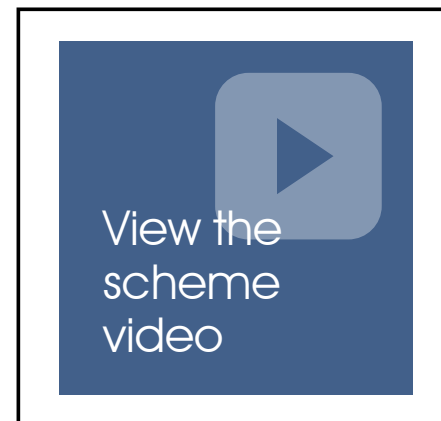


Mark Thallon
mark.thallon@tdkproperty.com
07802 520008

EXTERNAL LINKS



Fairhill
Website



View the
scheme
video



TDK
Website

